

## ALISON AMOROSO

### *What has been your personal involvement with education in our community?*

I attended local school council meeting, PTA, CINS, Board of Education meetings, and Go Team meetings to learn and share information. I engaged the Harvard Graduate School of Education for research on best practices for fifth and sixth graders, and middle school, for rezoning decision making and shared them with the superintendent and other APS leaders. I have volunteered in classroom, school, and for the PTA, and fundraised. I served on the Lake Claire Education Committee and encouraged the association to start a committee. Education is the number one ingredient that makes a community strong and vibrant. An educated community is healthier, safer, more engaged, and more equitable.

### *Why would you like to serve on the GO Team?*

I would like to use the skills I learned as a school therapist, board member for the Harvard Grad School of Education, staff at the Georgia Budget and Policy Institute, and an advocate for equitable state funding in Massachusetts on behalf of Inman and APS. I have a background in budgeting and strategic planning, and would like to put my experience into service to assist the school and Grady Clust

### *Describe your vision for our school.*

My vision is for Inman to continue to be an excellent school, adapting to new challenges as its population and staff changes. I would like to further the progress of the Go Team and Dr. Maxwell and the staff to create a safe, welcoming, nurturing school environment. I would like to bring in new resources and further a celebration of diversity and equality. I believe our parents are great advocates and that we can improve APS for Inman and all students.



## RITA BACOT SCOTT



## FREDERIC V BIEN

### *What has been your personal involvement with education in our community?*

I have been involved in public schools in the Morningside-Inman-Grady district for 10 years. My oldest child entered Kindergarten at Morningside in 2008, and my second child started in 2010. I have one child in gifted education and one in special education. So i've had a chance to see both sides. I am an active supporter of public education and a math tutor/Science Fair judge at Grady. I've been a proponent of social and emotional learning and programs for dyslexia.

### *Why would you like to serve on the GO Team?*

I'd like to serve on the GoTeam to serve all children of our community, who will form our future generation and to help provide fair chances for their education.

I had the chance to study and teach mathematics at MIT, Princeton, University of California, GeorgiaTech, Univ. Utah. I have experience i can share with administrators of our schools to help children excel in life and reach for the top.

### *Describe your vision for our school.*

Middle School is a challenging transition of life. Inman is a very good school. It has been great for my kids. It can be among the very best schools of Georgia while maintaining diversity and attention on remedial education. I've developed a good relationship with the principal, teachers and administrators. I am particularly interested in tackling the challenges of boys education through mentoring, and helping girls get into STEM careers.



## LINDA BRENNER

### *What has been your personal involvement with education in our community?*

Since 2016, I've helped with a variety of efforts at Inman Middle School including ongoing book / supply drives as well as assisting in starting an after-school program for Inman's impoverished students (currently in year two).

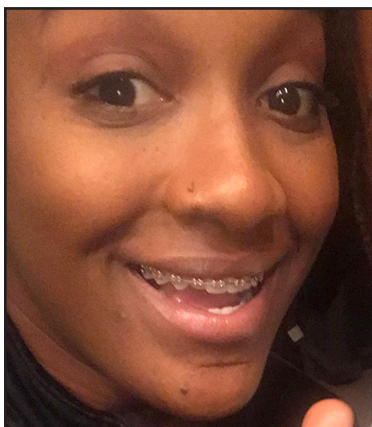
In the in-town community, in 2007 I was the founding parent of Jewish Kids Groups in Morningside which began with a one-day a week after school program. Today, JKG targets inter-faith and unaffiliated families, has over 300 students on multiple campuses in a variety of programs including a 5-day a week after school program that includes a homework helping, Jewish learning, Hebrew and activities curriculum.

### *Why would you like to serve on the GO Team?*

I believe I can contribute to Inman in a positive way on the GO team by leveraging my business background, previous volunteer work, bias for action, ability to get work done, a logical and realistic approach, and the ability to help drive others to consensus. I care about Inman, realize that we are operating with limited resources and increasing demands- and believe I can assist.

### *Describe your vision for our school.*

I would like to work toward a reality where teachers feel engaged, empowered and respected, parents are more involved, students are cared about and - to the extent needed - cared for, and the school is able to make on-the-fly, defensible decisions about how to prioritize and invest their limited resources - including time and money.



### DEMI HENDERSON

*What has been your personal involvement with education in our community?*

I volunteer at all school parties, field trips etc.

*Why would you like to serve on the GO Team?*

I grew up in a rough environment growing up however with my mentor I developed the want for something bigger than my environment. I feel like I can relate and be a support to children that attend the school from lower income areas. I also would like to be a support for my son and his fellow classmates.

*Describe your vision for our school.*

My goal is to help each and every child getting education that they deserve while being treated equally. I believe that I can cater to each and every child. My goal is also to keep each and every child safe.



### JAMES A MARSHALL

*What has been your personal involvement with education in our community?*

I've been quite present during my daughter's entire tenure at Mary Lin Elementary. I've volunteered for countless class activities, been a member of the PTA every year, led a Math Super Stars class for four years, carpooled & judged debate tournaments, chaperoned class field trips, made multiple Walk to School Day posters, and I'm proud to be a Platinum donor to the Mary Lin Education Foundation.

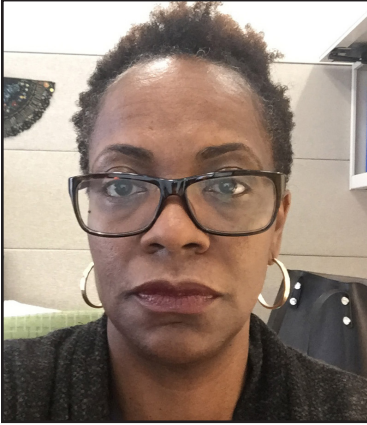
*Why would you like to serve on the GO Team?*

Being involved in my daughter's school is a high priority for me. That said, I know that the change from elementary to middle will require quite an adjustment, for both of us.

I want to stay as involved as possible, and the GO Team seems like an excellent vehicle. B/c I could walk to Mary Lin, I was intimately involved w/numerous school activities. I want to maintain that level of involvement.

*Describe your vision for our school.*

I don't have a vision for the school, per se. I'll be a first time parent at Inman. I can say that I'm proud to send my daughter to Inman; I'm extremely proud of the evolution of Mary Lin while we were there. And I have confidence that I can help promote positive / sensible changes where needed. I expect Inman to provide students support & opportunities for them to achieve their best.



## JEAN RUSSELL

### *What has been your personal involvement with education in our community?*

I am a parent of two boys one in elementary and the other middle school. I assist with activities at the school as needed. I am also involved in the Poncey Highlands neighborhood parents group and I participate in the monthly community meetings with our school board representative in which we discuss issues of importance to APS and the Grady Cluster. I also participate with a civic organization in which I provide educational support to children at Dunbar Elementary School and Jean Childs Young Middle School.

### *Why would you like to serve on the GO Team?*

I would like to serve as a member of the Go Team to have the opportunity to learn and participate in school governance. As I learn more about APS, its students, staff and the requirements imposed by Government to educate children, it increases my desire to do more to assist in the education of children.

### *Describe your vision for our school.*

My vision is to continue the vision of providing quality education for all students. Inman is unique in its diversity. However, that diversity provides some challenges not currently found in most APS schools. I would like to continue creating a learning environment in which all children can thrive and be challenged to grow socially and academically. My vision would also include creating standards around technology. Not only as it relates to having access to computers, etc., but around software and how technology is used to communicate with students, parents, staff and the surrounding community.



## KATHERINE SAMFORD

### *What has been your personal involvement with education in our community?*

My role in this academic community has primarily been as a parent of a student enrolled in APS schools, first at Springdale Park and now at Inman Middle. I have participated in a variety of school events, such as being a Mystery Reader, hosting a Career Day workshop, competing in the 5th grade Basketball challenge, and serving as a Science Fair judge. As a lecturer at the Georgia Institute of Technology, I help facilitate school visits to SPARK for our international English teachers program.

### *Why would you like to serve on the GO Team?*

As an involved parent and an engaged citizen, I am deeply committed to finding solutions to the challenges our schools and district face, providing support to the systems that are working, and sharing the successes we have. In a time when so many feel that their voices are not being heard or that their voices don't matter, I believe it is more urgent than ever to get involved, to speak up.

### *Describe your vision for our school.*

I envision our school as an institution where learning is championed as a lifelong endeavor; where character, resourcefulness, and creativity are fostered and valued as much as skills mastery; and where teaching and learning are not confined within the walls of the school building itself. We will be a model for the concept of school as both a foundation for and an extension of the local, state, national, and global community.



## RACHEL SILVERMAN

### *What has been your personal involvement with education in our community?*

In particular lately, I've been a strong advocate and supporter of the Afterschool Program, working with the guidance counselors and mental fitness to create an environment where transitional/at risk kids get homework/project support, nutritional meals and STEAM education. I've also helped provide extra supplies (backpacks, food, folders etc) to support these same population of students. I'm passionate about supporting Inman to support these kids.

### *Why would you like to serve on the GO Team?*

My work centers on process redesign, stepping back to analyze issues objectively and ELA my clients improve and continue to grow. I very much support public education and our children's rights to flourish and want to support these endeavors, from a parent's perspective.

### *Describe your vision for our school.*

My vision is a NOT overcrowded school where teachers and other school staff feel supported and have the resources they need to create a successful environment.



## ANTOINE RAYNARD TRAMMELL

### *What has been your personal involvement with education in our community?*

I have been involved in our community since moving to the area in 2011. At present, I have children in different APS schools and am a member of all PTO groups. I have actively supported the classroom as a room parent volunteer and chaired a program for a year. I regularly engage children by reading and participating in local athletic events supporting scholarships and educational initiatives.

### *Why would you like to serve on the GO Team?*

My interest in serving on a GO team is rooted in commitment to quality education. The success of our children is essential for our community's continued prosperity. As a parent, I care about the world our children will inherit. Thus, I am invested in their academic success, personal growth, and maturation into positive roles including leadership and community engagement.

### *Describe your vision for our school.*

I envision our school being a model demonstrating academic and personal success across diverse backgrounds through engaged parents, teachers, and community members using innovative and student-focused approaches.